



IR CAMERA

CMR 7384X / 7388X

D&N ATR 700TVL Vari-Focal IR Camera



700TVL ICON

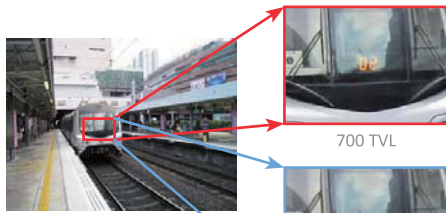


Resolution Of 700TV Lines

By adopting a diagonal 6mm(1/3") 480K pixels, 570K pixels CCD, the camera produces clear picture quality with a horizontal resolution of 700TV lines for color.



700 TVL



700 TVL

Conventional



High Light Compensation

Improves the visual recognition of license plates and other such objects by suppressing or masking strong light sources (such as the headlights of automobiles) in dark places.



Conventional



HLC



Adaptive Tone Reproduction

Improves the visibility of the entire picture by providing the optimum gradation compensation.



Conventional



2D ATR



AWB

Allows the color camera to adjust the tone according to the light source, adjust to produce white color while detecting white color object in the scene.



AWB OFF



AWB ON



Noise Reduction

Reduces the image noise in order to improve the image quality of the camera ,in particular ,it reduces the noise which is generated under low-brightness shooting conditions and other high-gain states

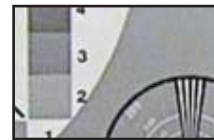
▶ Noise reduction keeping image sharpness (2D)



NR Off



Conventional NR



Preserved edge by New 2D-NR



Privacy Zone

Privacy zones prevent objects and areas such as windows and doors which are within the camera's viewing range but not in the scope of surveillance , 8 masking areas per screen simultaneously.



Conventional



Privacy Zone



OSD

This camera provides an on screen display (OSD) setup menu where all advanced functions can be selected and setup via OSD.



Color Rolling Suppression (ANTI CR)

Suppresses the color rolling which arises when there are slight deviations between the blinking frequency of non -inverter fluorescent lights and the drive frequency of the image sensor devices.



ANTI CR





CMR 7384X / 7388X

Camera Series
IR Camera

D&N ATR 700TVL Vari-Focal IR Camera

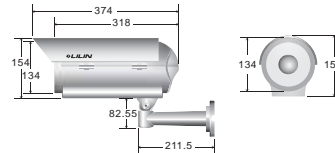
Features

- Resolution Of 700TV Lines
- Adaptive Tone Reproduction(ATR)
- Noise Reduction(2D-NR)
- High Light Compensatooon(HLC)
- Color Rolling Suppression(ANTI CR)
- Day & Night (IR Cut Removable)
- White Balance
- On Screen Display(OSD)
- Privacy Zone
- Radiant Distance Up to 100M
- Build-in 10X Megapixel Vari-Focal Lens



Dimensions Body: 146mm(W) x 154mm(H) x 374mm(D)

Bracket:211.5mm (L)
(Unit:mm)



Weatherproof IR Camera

Name		Day & Night ATR 700TVL Vari-Focal IR Camera		
Series Number		CMR7384X / 7388X		
Model		CMR7384X10N/P	CMR7388X10N/P	
Lens	Focal Length	5 ~ 50mm		
	Iris	F1.4		
	Angle of View	H	51.5° ~ 6.5°	
		V	37.5° ~ 5.0°	
D		6.5° ~ 8.1		
Power Supply		AC24V (±10%)	AC100~240V	
System		NTSC or PAL		
Pick Up Element		1/3" Exview HAD CCD Sensor		
Effective Pixels	NTSC	976(H) x 494(V) [NTSC]		
	PAL	976(H) x 582(V) [PAL]		
Chip Size		5.58mm(H) x 4.67mm(V)		
H/V Sync.	NTSC	15.734 KHz / 59.94Hz [NTSC]		
Frequency	PAL	15.625 KHz / 50Hz [PAL]		
Scanning System		2:1 Interlace		
Menu Control		OSD Control		
Sync. Mode		Internal		
Infrared Cut Filter		Auto Selectable, Automatic Switch From Color Mode to Monochrome		
Minimum Illumination	Color	0.045Lux / F1.4		
	Mono	0.009Lux / F1.4		
	IR On	0Lux		
S/N Ratio		More Than 50dB (AGC-OFF)		
Auto Gain Control		AUTO / MANUAL		
White Balance		ATW / PUSH / USER1 / USER2 / ANTI CR / MANUAL / PUSH LOCK		
Shutter	Auto	1/60(1/50)S ~ 1/100,000S		
	Manual	1/60(1/50)S, 1/100(1/120)S, 1/250S, 1/500S, 1/1,000S, 1/2,000S, 1/4,000S, 1/10,000S		
Adaptive Tone Reproduction	Luminance	LOW / MID / HIGH		
	Contrast	LOW / MIDLOW / MID / MIDHIGH / HIGH		
Back Light Compensation		BLC / HLC(High Light Compensation) / OFF		
Noise Reduction		Y / C / Y / C / O F F		
Picture Adjust		MIRROR / BRIGHTNESS / CONTRAST / SHARPNESS / HUE / GAIN		
Privacy Masking		ON / OFF		
Privacy Masking Zone		8 Zones		
OSD Language		ENGLISH/JAPANESE/GERMANS/FRENCH/RUSSIAN/PORTUGUESE/SPANISH/SIMPLY CHINESE		
Video Output		CVBS 1.0Vp-p, 75 Ohm		
Gamma Characteristic		γ=0.45		
Power Consumption		22W		
Operating Temperature		-10°C ~ + 50°C (14°F ~122°F)		
IP Rating		IP66		
Windows		Φ110 Heat Resistant Glass		
Blower Control		On:35°C , Off:25°C		
Heater Control		On:15°C , Off:25°C		
InfraredLED	PeakWavelength	850nm		
	Radiant Distance	100M		
	Beam Spread	10° + 30°		
Dimension		Body:146mm(W) x 154mm(H) x 374mm(D), Bracket: 211.5mm(L)		
Weight		3700g		