

OUTDOOR D/N CMOS HD IR IP CAMERA

Instruction

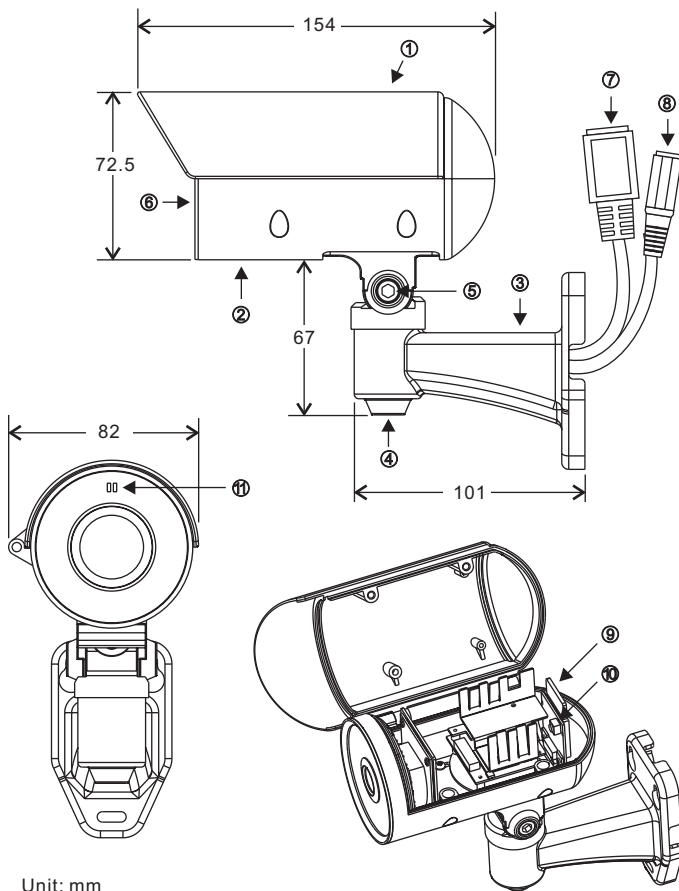
Executive Summary

IPR712S is an outdoor D/N CMOS HD IR IP camera built-in H.264 AVC(Advanced Video Coding) video compression.

H.264 AVC video compression engine supports high definition video quality, 720P resolution, bandwidth efficiency with PPPoE and DDNS.

Also it provides higher bit rate of internet and diverse alarm functions such as movement video detection e-mail or FTP. Moreover, IPR712S can do remote surveillance with Java or iPhone cell phone. The software R&D engineer can use HTTP protocol(HTTPAPI) to develop related software, and integrate them with existing application software system.

Part Description & Dimension



Unit: mm

- ① TOP COVER
- ② BOTTOM CHASSIS
- ③ BRACKET
- ④ PAN ADJUSTMENT SCREW
- ⑤ TILT ADJUSTMENT SCREW
- ⑥ WINDOW
- ⑦ RJ-45 NETWORK CONNECTOR
- ⑧ DC POWER INPUT JACK (DC12V ±10%)
- ⑨ SD CARD SLOT

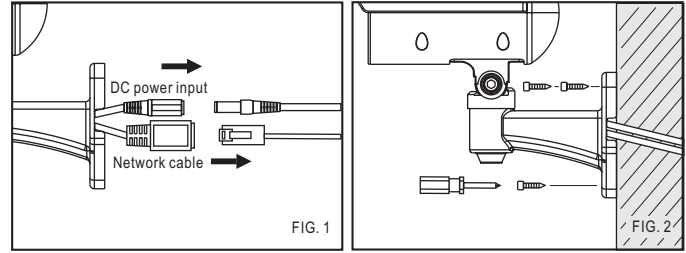
This network camera is compliant with SD/SDHC card.

- ⑩ RESET KEY
To restore the server to factory default setting.
- ⑪ NETWORK INDICATOR LEDES
Green (LINK): While cable of network is connecting the LED is light.
Orange (ACT): When data is communicating, the LED is flashed.

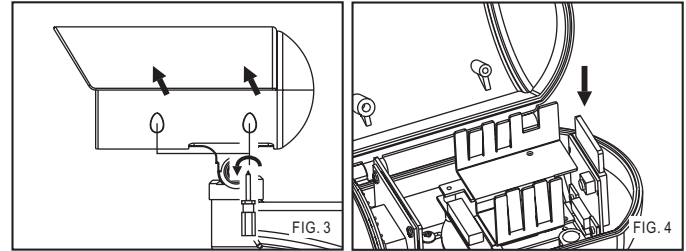
Installation



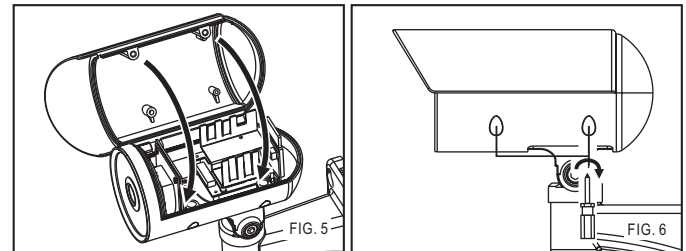
1. Take out the IP camera from the inner box first. Plug the network cable and power cable to RJ-45 network connector and DC power input jack of the IP camera(FIG.1). Then fix bracket to the wall(FIG.2).



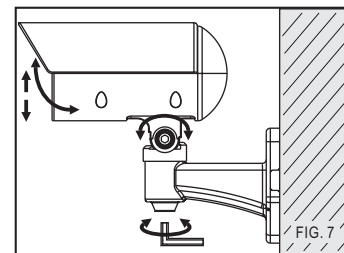
2. Installation SD card, please loosen the screws of top cover with screw driver (FIG.3). Put the SD card to SD card slot(FIG.4).



3. Replace the top cover and tighten the screws(FIG.5&FIG.6).



4. Loosen the pan and tilt adjustment screw on the bracket to turn the camera body to the desired angle and then tighten the screws(FIG.7).

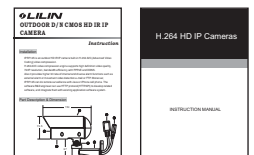


Product Components

1. OUTDOOR D/N CMOS HD IR IP Camera



2. Instruction Manual



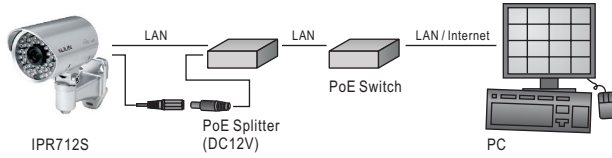
3. CD Software Pack



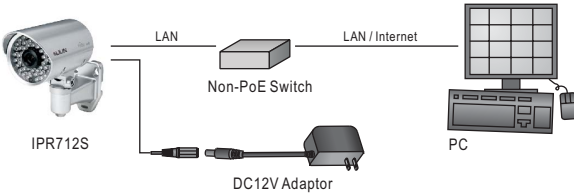
System Architectures

For connecting IPR712S to the network, please follow one of the system architectures:

(1). Hardware Installation using a PoE Switch and PoE Splitter.



(2). Hardware Installation using DC12V Adaptor.



Emergency Factory Default

To restore the server to factory default settings, please:

1. Hold Reset Key for 10 seconds.
2. The network LED lights turn off after about 20 seconds, then lit.
3. The server board reboots itself.
4. Using IPScan scanning for the IP address of the IP device.
5. Launch Internet browser for the IP address of the IP device.
6. Type default username "admin" and password "pass" for enter web interface of the IP device.

NOTE

For convenient purpose, IP address resets to default IP address, 192.168.0.200, after performing Load Default operation.

NETWORK	
Video Compression	H.264/AVC, Motion JPEG
Resolution	720P (1280x768) / VGA (640x384) / CIF (320x192)
Multiple profile	Stream 4 profiles: H.264 at 720P, JPEG at 720P, H.264 at VGA, JPEG at CIF
Frame Rate	H.264: Up to 20fps at 720P, MJPEG: Up to 10fps at 720P
Video Streaming	RTSP: RTP/HTTP, RTP/TCP, RTP/UDP
Video Bitrate	128Kbps ~ 5Mbps
Security	Base64 HTTP encryption Multiple user access levels with password protection 10 user accounts available
Users	8 simultaneous users
Digital Zoom	Yes
Motion Detection	Events triggered by built-in motion detection motion triggering recording into SD card Image upload over FTP, e-mail by motion detection
CPU, Memory	Embedded SoC ARM9, 500MHz 64MB DDR, 8MB flash memory
Maintenance	Firmware update via HTTP, Firmware available at web site
Network Interface	10Mbps / 100Mbps Base-T, RJ-45
PC Requirement	OS : Windows 2000, Windows XP, Windows Vista, Windows 7 Browser : Windows Internet Explore 5.0 or above CPU : Intel Pentium 4 1.8GHz or above RAM : 1GB or above, Independent Display Card
Network Protocols	IP, TCP, UDP, HTTP, SMTP, ESMT, NTP, DDNS, FTP, ARP, DHCP, PPPoE, DNS, RTSP, RTCP, Telnet
Mobile Phone and PDA Support	iPhone and Android support
System Integration	ONVIF
CMX	Free CMX support
Video Display	LILIN Universal ActiveX / Quick Time
OS	Embedded Linux 2.4.19
SD Card Recording	Support SD/SDHC card for circular recording (card is not included)

Design and specification are subject to change without notice.

Specifications

OUTDOOR D/N CMOS HD IR IP CAMERA		
Model No.	IPR712S4.3	IPR712S6
Lens	Focal Length	4.3mm
	Iris	F1.8
	Angle of View	49.8°(H), 36.8°(V), 63.6°(D)
Pick Up Element	1/4" Progressive scan CMOS sensor	
Effective Pixels	1280(H) x 800(V) = 1,024,000(pixel)	
Chip Size	3.88mm(H) x 2.43mm(V)	
Scanning System	Progressive Scan	
Infrared Cut Filter	Auto / Schedule / Day(Color) / Night(Mono)	
Min. Illumination	Color: 3Lux at F1.8 / Mono: 0.6Lux at F1.8 / 0 Lux with IR	
White Balance	Auto / Tungsten / Indoor / Fluorescents1 / Fluorescents2 / Outdoor1 / Outdoor2	
Back Light Compensation	Auto	
Electrical Shutter	1/30(25)s ~ 1/20,000s	
IP Rating	IP66	
Infrared LED	Peak Wavelength	850nm
	Beam Spread	30°
	Radiant Distance	16M
Operating Temperature	-10°C ~ +50°C (14°F ~ 122°F)	
Dimension	Body: 82mm(W) x 72.5mm(H) x 154mm(D) / Bracket: 101mm(L)	
Weight	600g	
Power Input Voltage	DC12V ±10%	
Power Consumption	10W	

Design and specification are subject to change without notice.